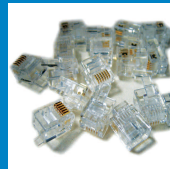
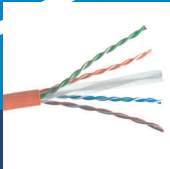
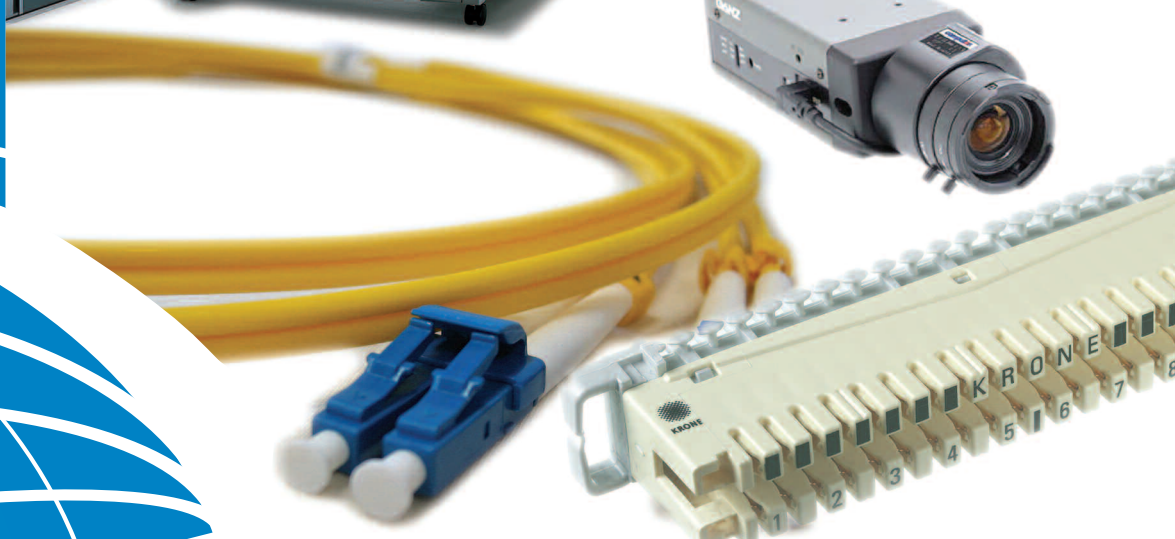
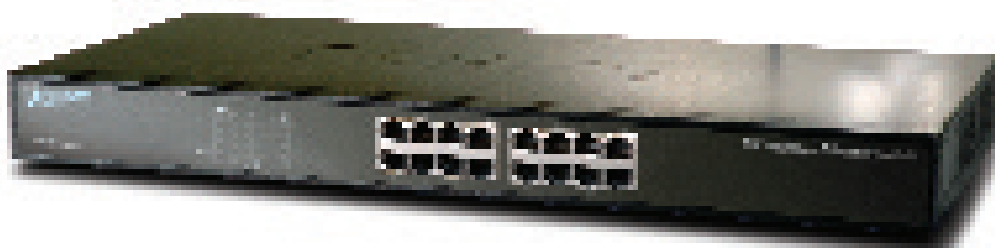




Wood
Communications
Ltd





Electronic/Active Equipment

KVM Switches - KVM Extenders - Digital Signage - Ethernet
Switches - Gigabit Ethernet Switches - Media Converters
Wireless LAN - Laser systems (Free Space Optics)



Raritan KVM Switches

114



Raritan KVM Switches

Raritan is a leading global supplier of Cat5 KVM, KVM over IP, Serial Console Server and Network Monitoring and Management solutions. We can help you simplify access, control, monitoring and management of your IT infrastructure equipment and the mission-critical services and applications that run on it

A KVM Switch allows access to Multiple servers using one Keyboard, Monitor and Mouse.

A KVM Switch is not part of the network and is not dependant on operating systems or any application software.

Switchman (Basic KVM Switch)

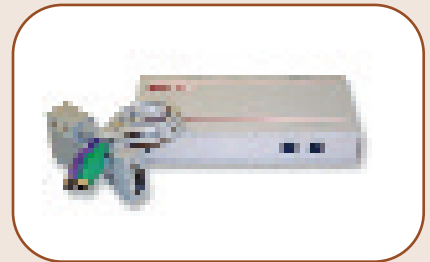
SwitchMan is a line of desktop KVM switch products for the small office/home office (SOHO) user that needs to control multiple PCs with a single keyboard, monitor and mouse. SwitchMan is ideal for situations where desktop space is a premium. By eliminating the need for separate keyboards, video monitors and mouse devices for each PC, SwitchMan saves valuable space, equipment costs and time

Description

2 Port KVM Switch
4 Port KVM Switch

Part No.

SW2/
SW4/



A Full range and combination of KVM Cables available on request.

Switchman Cable Plus

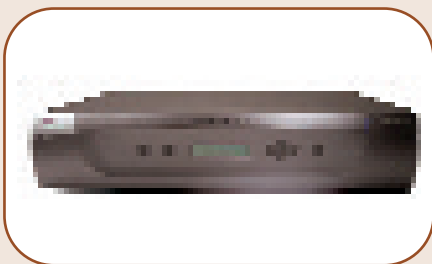
SwitchMan Cable Plus is a 2-port KVM (Keyboard, Video & Mouse) switch with integrated cables that allow access and control of 2 computers (PC and/or Mac*) from a single keyboard, monitor and mouse. This cost effective way to manage two computers from one KVM console saves time, money and space.

Description

2 Port KVM Switchman cable Plus

Part No.

SW2-CP



Paragon II

Paragon II is the latest version of Raritan's award winning Paragon family of Cat5 KVM Switches, unified management software, integrated power management, IP access options, and easy expansion Via Stacking.

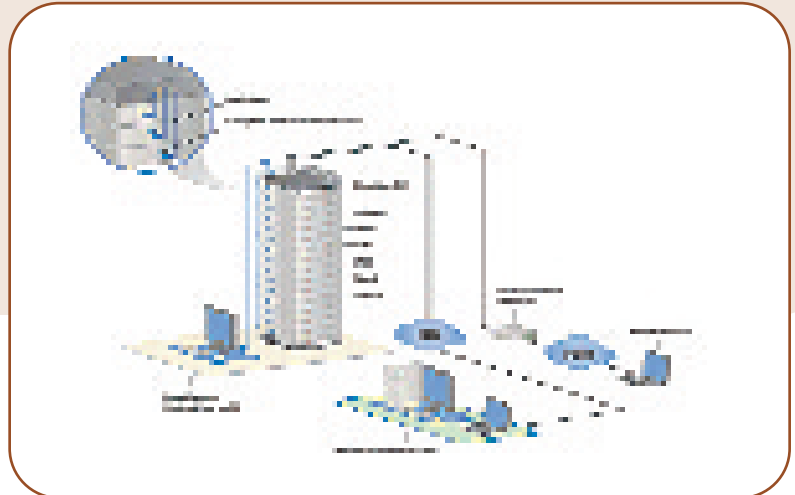
Paragon II offers the broadest line of KVM Switches, with 4 models that provide non-blocked access for up to 64 simultaneous users controlling more than 10,000 servers, while providing the industry's best video quality, manageability, response and security.



Dominion Switches

Dominion KX II

Dominion KX II is our next generation KVM-over IP solution that raises the bar. In addition to all the features found in the KX, it has universal virtual Media, dual power supply with automatic failover, absolute mouse synchronization and more.



Dominion® KX Digital KVM-Over-IP Switches

Dominion KX is an enterprise-class, secure, digital KVM-over-IP switch that provides 2, 3, 4, or 5 concurrent users with BIOS-level control of up to 64 servers or other IT devices from a single KVM console. It puts secure, server control in the hands of authenticated users whether they are at the rack, on-site, or off-site, without blocking remote users when the switch is accessed by local users.



Dominion SX

Dominion SX is a secure console server for local and remote access to serially managed servers and other serial devices via SSH/Telnet and Web browser. Dominion SX allows access and control of servers and other IT devices. Dominion SX provides one point of control to manage users, serial servers and other IT devices.



Dominion Switches, KVM & USB Extenders

116

Dominion KX101

Enterprise-Class KVM-over IP device that delivers all the performance and security of Raritan's industry leading Remote KVM access can control technology in a "Zero-U", single -port density form factor. KX101 connects 1 user to one server at a dedicated IP address and eliminates the block factor inherent in switched KVM architectures.

For more information on the Raritan range of products contact a member of our sales Team today @ 01-4264000 or go to www.raritan.info



KVM Extenders (Datacat)

The dataCat vp125 series of KVM extenders allow the keyboard, monitor and mouse to be placed up to 125m from the computer. The system consists of a transmitter and a receiver unit connected by a Cat 5/6 cable. A high quality VGA image is assured by the powerful equalization circuits.

- Extends keyboard, video and mouse up to 125 meter away from the computer
- Excellent video quality: supports resolutions up to 2048 x 1536 at 50 meter, and 1280 x 1024 at 125 meter

Part No. DC-VPI25KIT

The dataCat vp300 series of KVM extenders allow the keyboard, monitor and mouse to be placed up to 300m from the computer. The system consists of a transmitter and a receiver unit connected by a Cat 5/6 cable. A high quality VGA image is assured by the powerful equalization circuits. Moreover, cable skew is included in the vp300 unit

- Extends keyboard, video and mouse up to 300 meter away from the computer
- Excellent video quality supports resolutions up to 2048 x 1536 at 100 meter, 1920 x 1280 at 200 meter, and 1600 x 1200 at 300 meter

Part No. DC-VP300KIT

Datacat VP Dual Head Kvm Extender

The DataCat dual VGA interfaces are designed to allow 1 remote keyboard and mouse as well as 2 remote screens to access on Pc with dual VGA from a distance of 125 or 300 meters. The system consists of a transmitter and a receiver unit using two Cat 5/6 cables to transmit Keyboard, mouse and two discrete hi res VGA signals.

Part No.
DC-VP-125-2(125m)
DC-VP-300-2(300m)

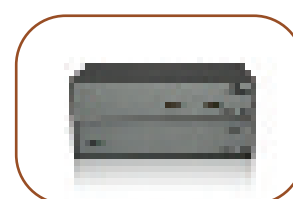


USB Extender

The dataCat vu 100 allows you to place your VGA display and USB peripheral units up to 100 meters from your PC. The product set consists of two units, the transmitter and receiver, connected by a single Cat 5 or Cat 6 "link" cable (also called PDS or Ethernet cable). Any VGA compatible display can be connected to the receiver unit and any USB 1.1 compatible peripherals, including keyboard, mouse, scanner, hard disk, and docking cradles, can be connected to the four port hub on the receiver. The transmitter unit is connected to the appropriate VGA (HD-15) and USB connectors on the computer.

- VGA displays and USB 1.1 peripherals can be placed up to 100 meter away from the computer
- Excellent video quality :supports resolutions up to 2048 x 1536 at 50 meter, and 1280 x 1024 at 100 meter

Part No.
DC-VU100KIT





VGA Extender, inVision (Digital Signage)

117

VGA Extender

The avCat video transmission system is a modular distribution system for VGA and audio signals using Cat 5/6 cabling. The VGA image from a computer can be displayed on up to 500 monitors connected by up to 10km Cat 5/6 cabling.

All system units also support audio (one channel of mixed analogue stereo in a reasonable quality) as an option. Together with the skew compensation units it is possible to create avCat transmission/distribution systems to suit almost any requirement.

- Transmission of VGA/SVGA/XGA to multiple monitors.
- Transmitter units with 1 and 4 Cat 5/6 outputs
- Receiver units for either 125m or 300m maximum distance

Part No. AC-DS125

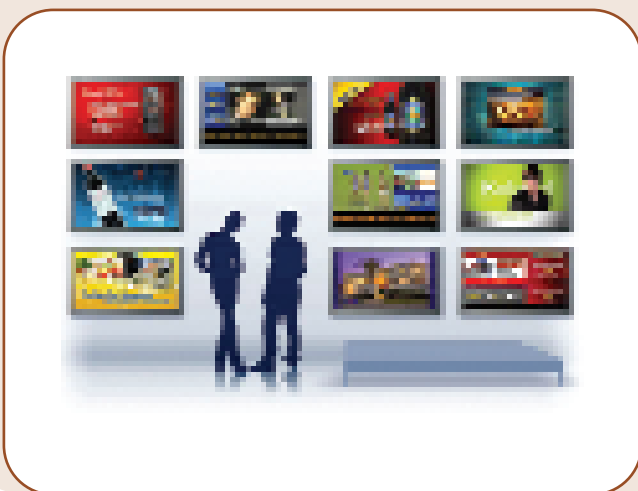


inVision (Digital Signage)

Distributed content management

inVision is a complete system for managing digital signage information. Whether you have one information monitor in your entrance hall, or 1,000 info marketing monitors in 300 retail locations in 75 cities, we can guarantee that your media will be shown on the right monitor at the right time, every time.

Our focus is on transmission and administration. Content creation we leave to the specialty programs, and we support all common audio, still picture and video formats, i.e. MPEG 2, 3, 4, JPEG, TIFF, DivX, Xvid, and many more.



The inVision system consists of three subsystems: the inVision software package; the netPlayer media player product range; and the avCat audiovisual transmission system. Our combination of hardware and software means that we have complete control of the digital media data stream from the server to the monitor. We deliver a solution that is tested and reliable.

Multimedia Net Player

The NetPlayer is a media player which offers full screen video at 25 fps with resolutions up to 2000x1600. The optional VGA over Cat 5/6 transmitter card, together with the avCat vr125 Cat 5/6 receiver, makes cabling effortless (standard structured cabling).

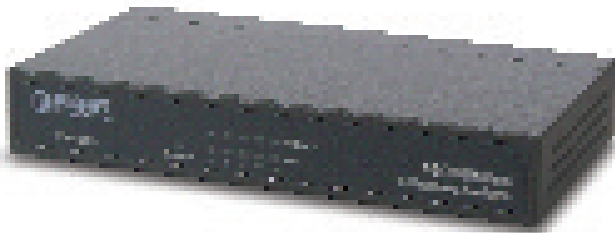
The inVision NetPlayer 2 offers full screen video playback at 25 fps with resolutions up to 2000x1600 with dualhead capability. The NetPlayer is a "black box" in an industrial strength housing of CIM interconn's own design. Made of 1, 2 mm sheet steel, the matt black color and minimalistic Scandinavian design will fit into most design schemes. The product can also be supplied in a color of the customer's choice.

The NetPlayer 2 is an advanced media player built on traditional PC components with a feature set optimized for Digital Signage infrastructure jobs. The use of traditional PC components gives the optimal cost/benefit ratio.

For more information on the CIM interconn range of products contact a member of our sales Team today @ 01-4264000 or go to www.cim-interconn.com

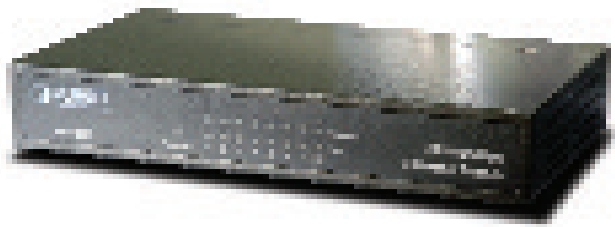
Active Networking

118



Soho Fast Ethernet 10/100 Switch

Description
5 Port 10/100 Unmanaged 10/100Mbps Switch
Part No. FSD-503



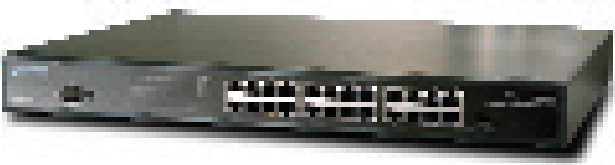
Description
8 Port 10/100 Unmanaged 10/100Mbps Switch.
Part No. FSD-803

Description
16 Port 10/100 Unmanaged 10/100Mbps Switch.
Part No. FSD-1603



19- Inch Unmanaged 10/100 Switch

Description
16 Port 10/100Mbps Unmanaged Switch
Part No. FNSW-1601



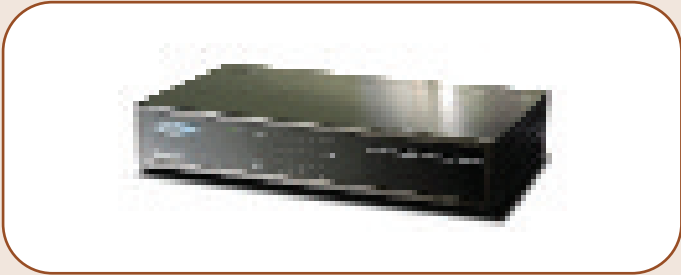
Description
24 Port 10/100Mbps Unmanaged Switch
Part No. FNSW-2401



Description
48 Port 10/100Mbps Unmanaged Switch
Part No. FNSW-4801

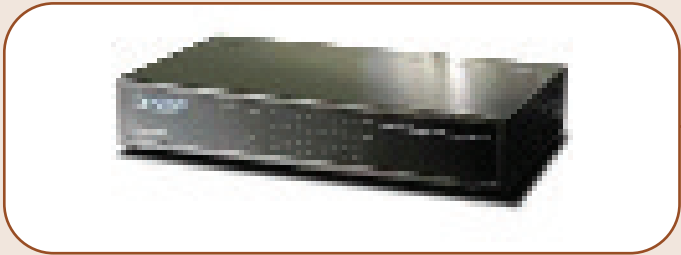


Gigabit Ethernet Switches

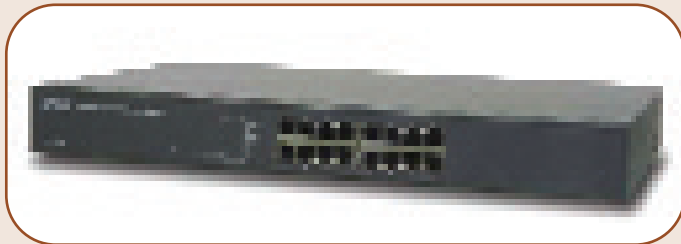


Soho Gigabit Switch

Description
5 Port 10/100/1000Mbps Gigabit Switch
Part No. GSD-503

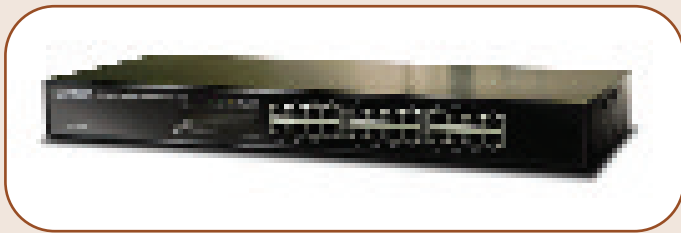


Description
8 Port 10/100/1000Mbps Gigabit Switch
Part No. GSD-803



19-Inch unmanaged Gigabit Switch

Description
16 Port 10/100/1000Mbps Gigabit Switch
Part No. GSW-1601



Description
24 Port 10/100/1000Mbps Gigabit Switch
Part No. GSW-2401



Description
24 Port 10/100Mbps + 2 Gigabit Ports
Part No. FGSW-2620

Power –Over Ethernet (PoE) Switches

120

Web –Smart 8/16 Port Switch with 4/8 Port PoE

Description

Web Smart 8 Port 10/100Mbps with
4 Port PoE Switch

Part No.

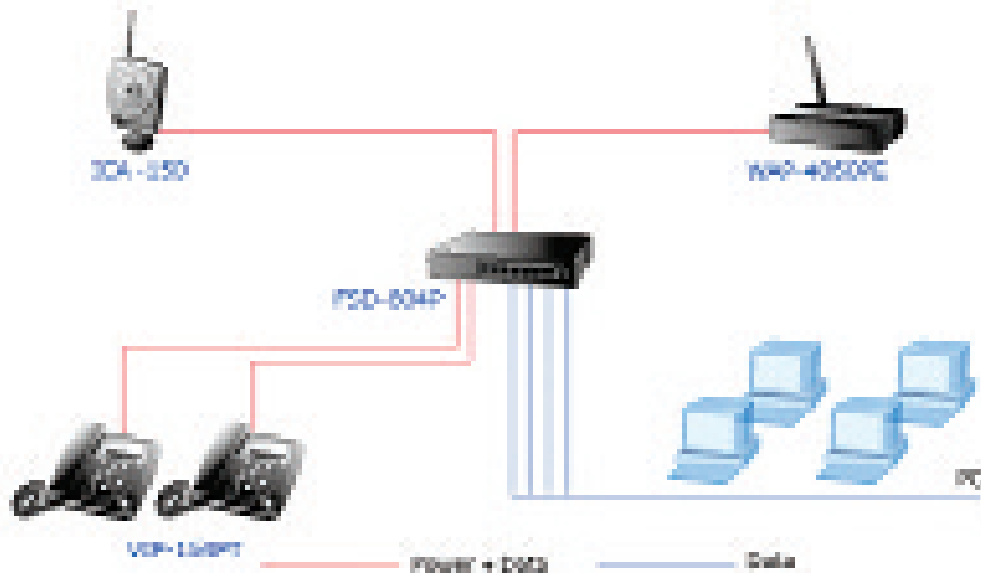
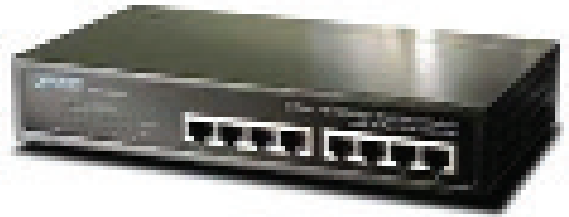
FSD-804PS

Web Smart 16 Port 10/100Mbps with
8 Port PoE Switch

FNSW-1608PS

Web Smart 24 Port 10/100Mbps
+ 2 Gigabit PoE Switch

FGSW-2620PVS



FT-801



FT-802



FT-802S

MEDIA CONVERTERS FIBRE-COPPER

Description

10/100TX to 100FX (ST M/M) 2KM

Part No.

FT-801

10/100TX to 100FX (SC M/M) 2KM

FT-802

10/100TX to 100FX (SC S/M) 15KM

FT-802S15

M/M = Multimode S/M=Singlemode



Gigabit Modules, Wireless LAN

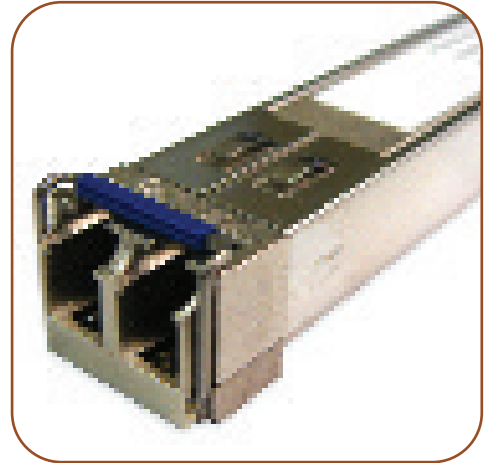


Gigabit

1000Base T to 1000Base-SX
Gigabit GT-702.
(Multi Mode) Media
converter 220/550mtrs

Part No. GT-702S (Single Mode)

Distance up to 120km
available upon request.



Gigabit Modules (GBIC)

Description

1000Base T-Module RJ45 (100mtr)
Part No. MGB-GT

Description

1000Base SX Module LC (550mtr)
Part No. MGB-SX

Description

1000Base LX Module LC (10km)
Part No. MGB-LX

Wireless Lan Solutions

Wireless LAN is changing current network structure rapidly. Due to the popularity of the mobile calculating devices such as notebooks and PDAs, and the users are anxious to free themselves from constraints on cables, the contemporary enterprises should consider to deploy their own WLAN.

Planet provides both indoor and outdoor wireless solutions in accordance with different purposes and demands. With the implementation of 802.1x and WPA (Wi-Fi protected Access), wireless LAN users are having a high level of assurance that their data will remain protected and that only authorized users can access the network.

- Wireless connection without hassles and cost of cabling
- Compliant with wireless industrial standards
- High Security WEP,WPA,WPA2
- User –Friendly interface to ease of Management.

Super G 54/108Mbps Access Point

54/108Mbps Super G Wireless
Access Point with Bridge
Part No. WAP-4000

54/108Mbps PoE Enterprise Super
G Wireless Access Point with
Bridge
Part No. WAP-4060PE



802.11a+/ Super G Wireless LAN

Super A+G 54/108Mbps
Dual Band Access Point
54/108Mbps PoE Enterprise
IEEE 802.11a/b/g Dual

Part No. WDAP-2000PE

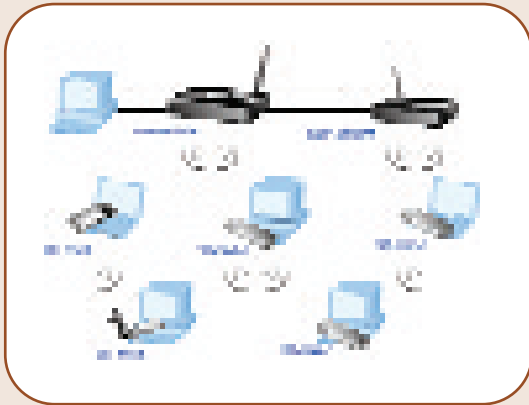
Band Wireless Access point with Bridge





WLAN Adapter & Internet Camera

122



Super G 54/108Mbps
WLAN Adapter

54/108Mbps PCMCIA
Wireless LAN Adapter
Part No. WL-3560

54/108Mbps PCI Bus
Wireless LAN Adapter
Part No. WL-8310

54/108Mbps Wireless
LAN USB Adapter
Part No. WL-U357

Internet Camera
Wired/Wireless Internet Camera

Description
Internet Camera (I/O, Audio, RJ45)

Part No.
ICA-1110

802.11g internet Camera
(WLAN, I/O, Audio, RJ45)

ICA-1110W

For more information contact a member
of our sales Team today @ 01-4264000



Free Space Optics System

Lighthouse Compact Laser System

LightPointe's outdoor wireless solutions earn high marks in Enterprise networks for bridging two or more buildings in LAN-to-LAN backbone connectivity with extraordinarily high bandwidth up to 1.25 Gbps. LightPointe products include point-to-point Optical Wireless connectivity solutions—as well as our latest breakthrough point-to-point solution with fully integrated switching that blends Optical Wireless and unlicensed RF to achieve 99.999% uptime.



FlightLite 100/FlightLite 100E

The FlightLite 100 is the best-selling LightPointe Optical Wireless product for 100 Mbps of Enterprise connectivity for recommended distances up to 500 meters. The FlightLite 100 is the perfect alternative to T1/E1 leased lines or 802.11 outdoor LAN solutions.

Highlights:

- Shorter-range Enterprise LAN connectivity
- Power over Ethernet
- No electrical power source required
- Full-duplex Fast Ethernet throughput
- Immune to spectrum issues
- License-free worldwide
- 3 Years Warranty.

Part No.

FlightLite 100 = 500mtrs approximately.

FlightLite 100E = 1000 mtrs approximately.



FlightStrata 155E/FlightStrata G

The FlightStrata 155 takes LightPointe's multi-beam technology in a stand-alone Optical Wireless product to the next level, offering improved performance and delivering connectivity throughput at longer distances. The FlightStrata incorporates four beams and four receivers, plus auto-tracking. The combination delivers improved performance across the street over two dozen city blocks and is the direct result of direct customer feedback and input.



Highlights:

- Multi-beam, multi-receiver design
- Auto tracking
- Full-duplex 155 Mbps
- Immune to interference
- License-free worldwide

Part No.

Flightstrata 155E = 2000 Mtrs approximately.

Flightstrata G = 1000 Mtrs approximately.

Cabling too expensive? Installation time limited?
Then look no further we have the answer.
The cost effective line of sight solution that works.

Call 01 4264000 for further details
or check out www.lightpointe.com



| Fibre Optic Cabling |

| KVM Switches |

| Copper Cabling 5e, 6, 6a |

| Home Automation |

| Coaxial Cabling |

| Tools & Test Equipment |

| Cabinets & Enclosures |

| Training & Education |

| CCTV & IP Surveillance |

| Audio Visual Hardware |

| CCTV Transmissions Systems |

| Digital Signage |

| Telephone Systems |

| Consumables |

Wood Communications
Unit L7 Ballymount Industrial Estate
Dublin 12

Tel: +353 (0)1 426 4000

Fax: +353 (0)1 450 1946

E-mail sales@woodcomm.ie

Website: www.woodcomm.ie