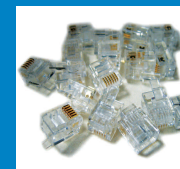
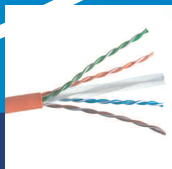
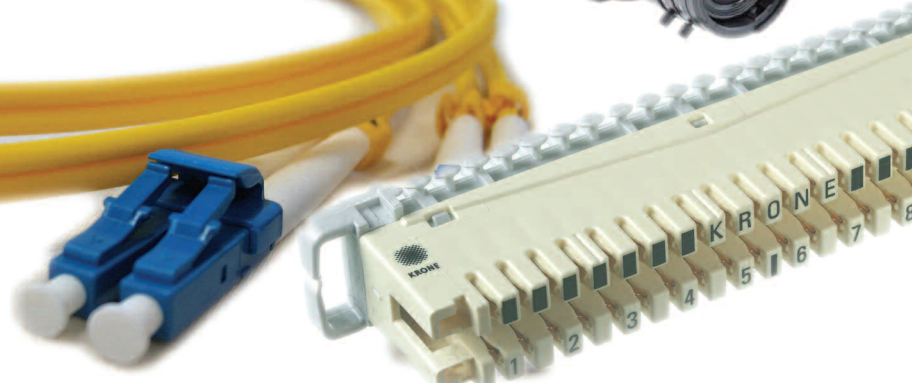
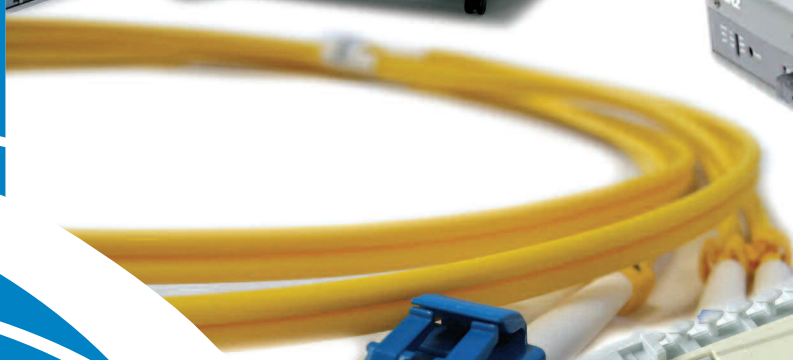
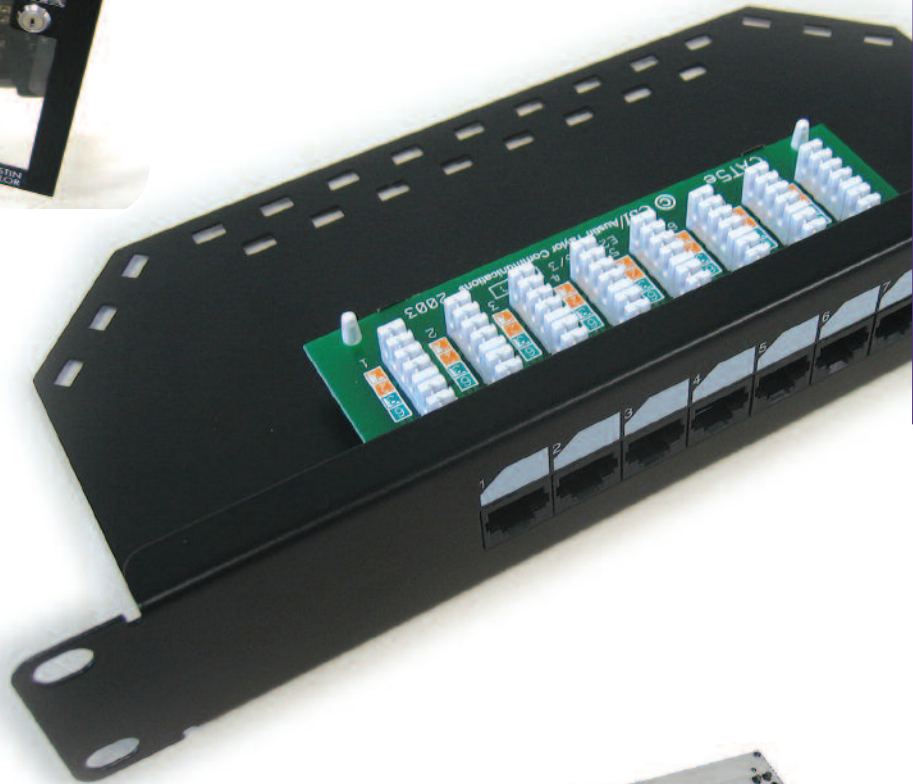




Wood
Communications
Ltd





Small Office
& Home Solution

Small Office / Home Solution

- Min LAN Comms Cabinets - Multimedia Panel
- Soho Ethernet Switches - Multiroom Audio/Video, TV Distribution over Structured cabling
- Nexus Hubs/Panels

SOHO MINI CAB OFFICE SOLUTIONS

26

Ideal for small office or home solutions.



The A/T minipatch system is designed for use in small office/home office installations or location where 19" rack mount box is inappropriate.

The 8U Capacity provides ample space for most small to medium installations and the semi gloss black finish fits unobtrusively into the office environment.

Dimensions

365mm High x 360mm wide x 350mm Deep.

- 8U Capacity
- Removable side panels and back panel.
- Cable entry points top, bottom and sides
- Reversible and lockable door
- Wall mount or Desktop
- Large range of accessories

Description

Minipatch Cab 8u plain style Door
Part No. 9BOX220872



Description

Minipatch 8 port Cat5e patch Panel
Part No. 9PAN202121



Description

Minipatch 3 port 13amp PDU
Part No. 9PAN221771



Description

9 Port F Type SOHO Mount Patch panel
Part No. BPIFS

Description

Din Rail SOHO Mount
Part No. SPDRAIL



Description

25 X 50 F Type F-F
Part No. R009C

Description

25 x 50 TV Module Female
Part No. R009D



SOHO 10U MINI CABINET Unshielded Solutions (UTP)



SOHO 10U MINI CABINET.

Dimensions
494mm High x 356mm Wide x 262mm Deep.

- Solid steel frame removable lockable front door with Perspex insert
- Removable side panels with ventilation strip.
- Removable Rear Panel
- Cable access gland plates on top and base of cabinet
- Finished in satin black

Description
Minipatch Cab 10u Perspex door
Part No. Minicabsoho

Description
Minipatch Cab 6u Perspex door
Part No. Minicabsoho6u

Multimedia panel

Ideal for TV Distribution over Coaxial Cable. The function of the multimedia panel is to provide the means of distributing broadband and digital TV signals and audio services around the premises over coaxial cable. The unit has an integral amplification circuit powered by an external power supply which boosts the incoming broadband signal from the antenna, satellite dish or CATV feed. The signal is then distributed via eight 'F' connectors fitted to the rear of the panel. These can be connected directly to the coax network or to the coax distribution panel by coax patch leads.

The multimedia unit comprises a shelf fitted with a PCB based splitter & amplification system. The face of the unit is silk screened for ease of identification. All connections are rear facing to facilitate the bend radius required for co-ax cables. 'F' connectors are used to connect the incoming signal and distribute it through up to eight outlets. Terminators are provided for use on any unused outlet to provide protection against any electro magnetic ingress on the return path. The panel should be mounted in any convenient location in the SOHO cabinet, If a separate co-ax distribution panel is used this should be mounted adjacent to the multimedia panel.

What is supplied with it?

External power supply. Fixings are included to secure the panel in the SOHO cabinet. Terminators are provided for unused connections



Description
8 port Minipatch F Type
Coax Multimedia Panel
Part No. 230008

SOHO Ethernet Switch

28

Ideal for Small Office Network

The function of the switch is to enable PC's and peripherals to be networked to share files and printers etc. Data is transferred at 10 megabits/sec (10base t) or 100 megabits/sec dependent on the switch selected and the network card fitted to the device connected.

The 10/100 base t hub has an integral switch which will sense what baud rate (speed) a particular port is connected at, and will configure the port to suit.

The switch comprises a 1u unit, which mounts directly into the SOHO cabinet an external power supply is provided. The Switch is provided with eight RJ45 ports on the face which allow connection via patch cords to the various pieces of equipment installed, directly or via a patch panel.

The ports are numbered for identification and LED's are provided to monitor activity. An uplink port is provided for connection to additional Switches.

The Switch should be mounted in any convenient location in the SOHO cabinet. Fixings are included to secure the panel in the SOHO cabinet.

What it needs: 10 base t or 100 base t network cards will be required at each PC or device connected to the switch. It is not necessary to ensure that all cards are rated at the same speed.

The panel should be mounted in the uppermost location in the SOHO cabinet rear rack to avoid heat dissipated from the power supplies passing through the other equipment.

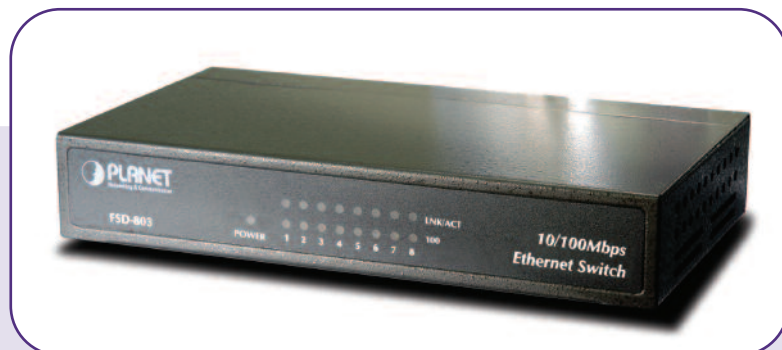
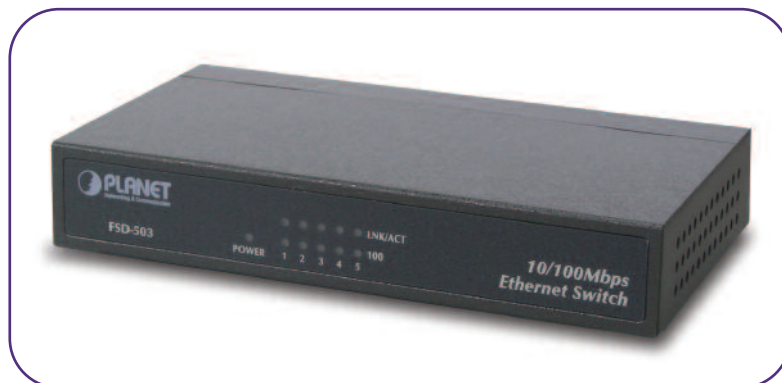
Fixings are included to secure the panel in the SOHO cabinet.

Description

5 port 10/100 RJ45
Ethernet Switch
Part No. FSD 503

Description

8 port 10/100 RJ45
Ethernet Switch
Part No. FSD 803





Nexus Multiroom Audio, Video Control System Over UTP Cat5e Cabling

Nexus AV Hubs

The Nexus Hub panel accepts video and audio signals and distributes them over a UTP or STP structured cabling network enabling TV, LCD, Plasmas screens and speakers to be connected via standard RJ45 sockets. Incorporating the Nexus Hub panel it renders coaxial cabling unnecessary throughout the premises the only requirement being from the aerial/dish to the tuner/decoder which would be located within your communication cabinet. Hence a truly flexible network is now possible where any of the installed RJ45 outlets can be used to distribute all music and video along with telephone, data, CCTV, TV, and audio connections.

It is modular allowing you to build a system to suit your home and it is designed to be future proof and upgradeable as you grow. It is also simple to use giving you control of all your equipment at your finger tips.

- 6, 9, 12, or 18 rooms
- 6,9,12 Av Sources(Eg Satellite, Freeview box, DVD, MP3 Players, DVR)
- Composite Video
- Stereo Line Level Audio.

Nexus Amplifiers

Each speaker is powered by an amplifier. The Nexus Amps are either placed at the central hub for maximum flexibility and accessibility or in the ceiling to minimise wiring.

- For central amp cable with Cat5e and 4 core speaker wire to speakers
- For in Ceiling amp wire with Cat5e to amp+ Local power supply.
- 15W per Channel stereo amplifier
- Nexus modular amp case holds 2-6 Amplifiers

Nexus Patch Panels

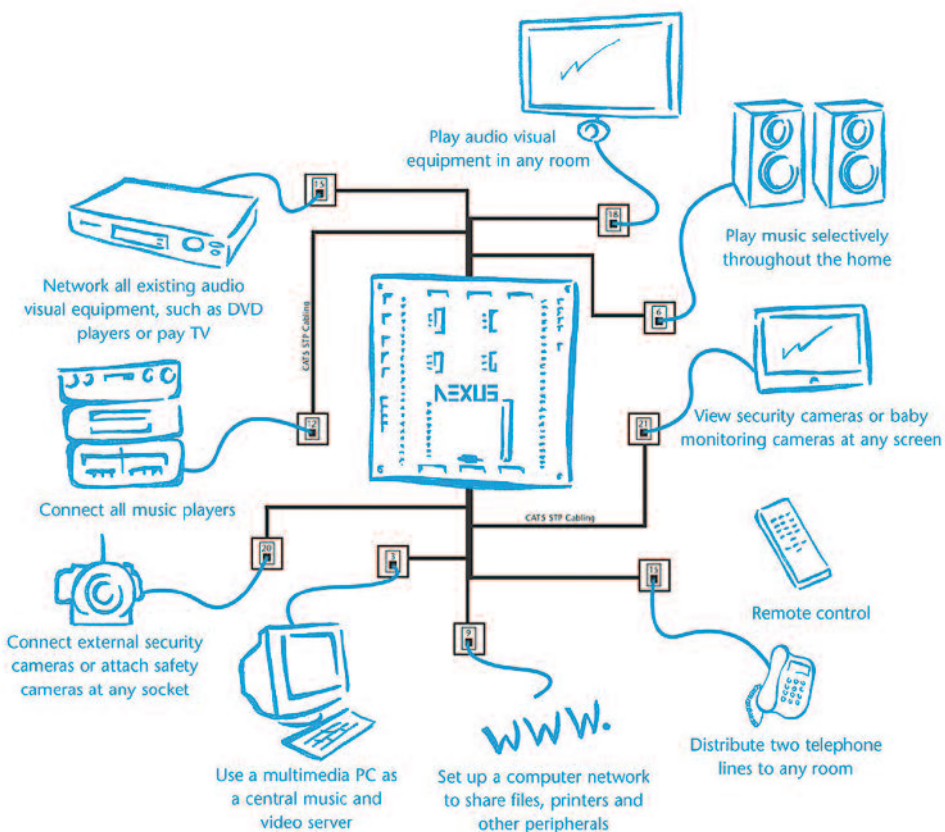
The Nexus System uses industry standard Cat5e, 6 or 7 Cabling in a star configuration to a central hub. Nexus patch panel box terminates Cat5e and speaker wires.

- 8-48 Cat5e terminations
- 6-12 Ceiling speaker connections
- Cable Cat5e, 6 or 7 Unshielded or Shielded.

Nexus Speakers

Compliment your home with in ceiling speakers. Nexus Ceiling speakers have in built IR receivers for a simple elegant installation. A range of speakers are available for different situations in both stereo and home configurations.

We are always adding to the Home Entertainment Market/Automation call for new products or log onto www.woodcomm.ie





| Fibre Optic Cabling |

| KVM Switches |

| Copper Cabling 5e, 6, 6a |

| Home Automation |

| Coaxial Cabling |

| Tools & Test Equipment |

| Cabinets & Enclosures |

| Training & Education |

| CCTV & IP Surveillance |

| Audio Visual Hardware |

| CCTV Transmissions Systems |

| Digital Signage |

| Telephone Systems |

| Consumables |

Wood Communications
Unit L7 Ballymount Industrial Estate
Dublin 12

Tel: +353 (0)1 426 4000

Fax: +353 (0)1 450 1946

E-mail sales@woodcomm.ie

Website: www.woodcomm.ie